

# NDA Procurement Strategies Safespur Workshop

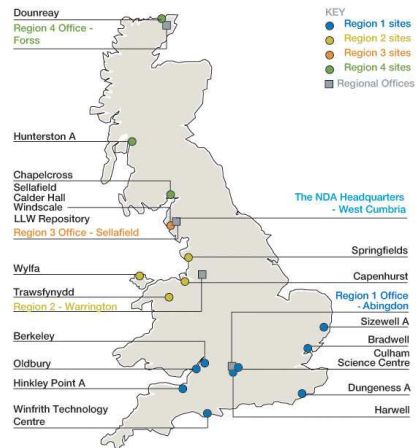
**Ron Gorham**  
**Head of Competition**

## Agenda

- Background
- Approach to Competition
- Case Study – LLWR
- Other opportunities
- Questions and Answers

2

## Where are we – a quick geography lesson

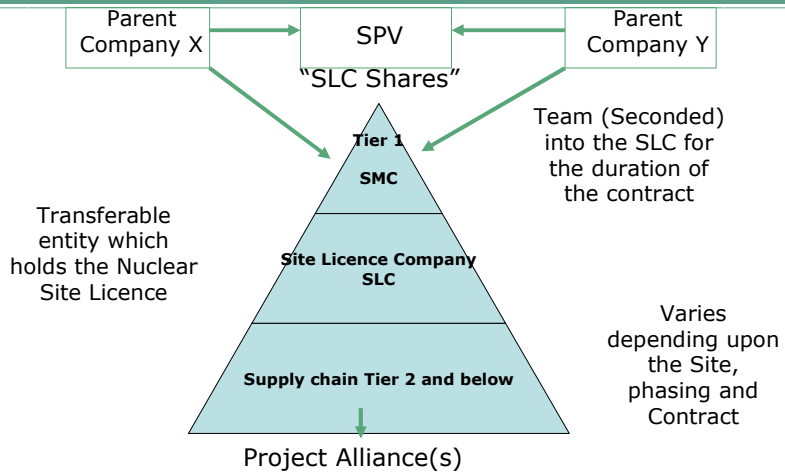


3



29/09/2006

## Structural Model

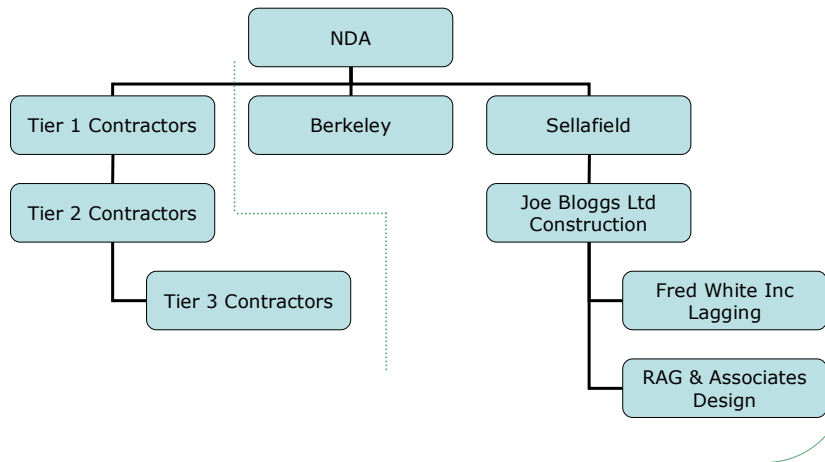


4



29/09/2006

## Hierarchy of the supply chain



5

NDA

29/09/2006

## Competition Schedule

Site	Project start
LLWR at Drigg	Initiated
BNG sale	2007
Magnox South (Berkeley, Bradwell, Hinkley Pt A, Dungeness A, Sizewell A) & Dounreay	2008
Dounreay	2008
Magnox North (Calder Hall, Chapelcross, Hunterston A, Trawsfynydd, Oldbury, Wylfa)	2009
Harwell and Winfrith	2009
Sellafield and Windscale	2012
Capenhurst, Culham and Springfields subject to review	TBA

6

NDA

29/09/2006

## Approach to Competition

- Opening problems to a widest market
- Focusing on results
- Not mandating “one solution”
- Facilitating international participation
- Appropriate risk and reward models
- Focusing on longer term National or strategic solutions
- Life cycle
- Collaborative approach

7

## LLWR – the issues

- Finite capacity
- Flexible solutions
- Longevity of solution
- National verse regional solution
- Wide user base
- Cost
- Strategic National importance

8

## LLWR - Scope

- Two elements
  - Element 1 (Day 0 to Contract completion)
    - Operation of LLWR
    - Demolition of PCM Magazines
    - End State Definition and Site Closure
  - Element 2 (~12-18 Months onwards)
    - Propose and implement integrated final LLW management solution

9

## Procurement Strategies

- Simple Procurement – Element 1 only
- Simple Procurement – Element 1 with a separate competition for Element 2
- Single Procurement (Phased) – Element 1 with an option for Element 2
- Single Procurement (Integrated) – Element 1 and Element 2.

10

## 2007/08 costs (£m)

Site	Decommissioning & Clean up Costs
Berkeley	33.1
Bradwell	39.7
Chapelcross	34.4
Dungeness A	36.6
Hinkley	47.5
Oldbury	2.9
Sizewell A	38.5
Trawsfynydd	32.3
Wylfa	0.5
Downreay	134.6
Harwell	57.2
Windscale	26.3
Winfrith	36.1
LLWR	22.3
Calder Hall	19.5
Sellafield	293.2
Capenhurst	8.4
Springfields	12.3

11

**Can anyone remember the current estimate of contaminated land at Sellafield alone?**

12

# 20 Million cubic metres !

13

## Just a few future Environmental Challenges

- Chapelcross – Contaminated Ground Management
- Dounreay
  - BPEO for managing particles
  - Design for the shaft and silo retrieval
  - New LLW disposal facility
- Dungeness – contaminated land survey
- Harwell – operation of soil vapour extraction plant
- LLWR – Clean up of contaminated land
- Oldbury – Environmental Impact Assessment for Decommissioning

14

## And finally

- Contaminated land represents one of our most significant challenges
- The historical legacy that we have to deal with is a mixture of authorised disposals and accidental releases
- Progress has been made but we don't yet have a consistent and robust understanding of all the issues
- Our role is to finally deal with these issues recognising that;
  - One size will not fit all
  - The solutions need to be technically and socially acceptable
  - Regulatory environment likely to become more restrictive
- No “nuclear or chemical dustbins”

15